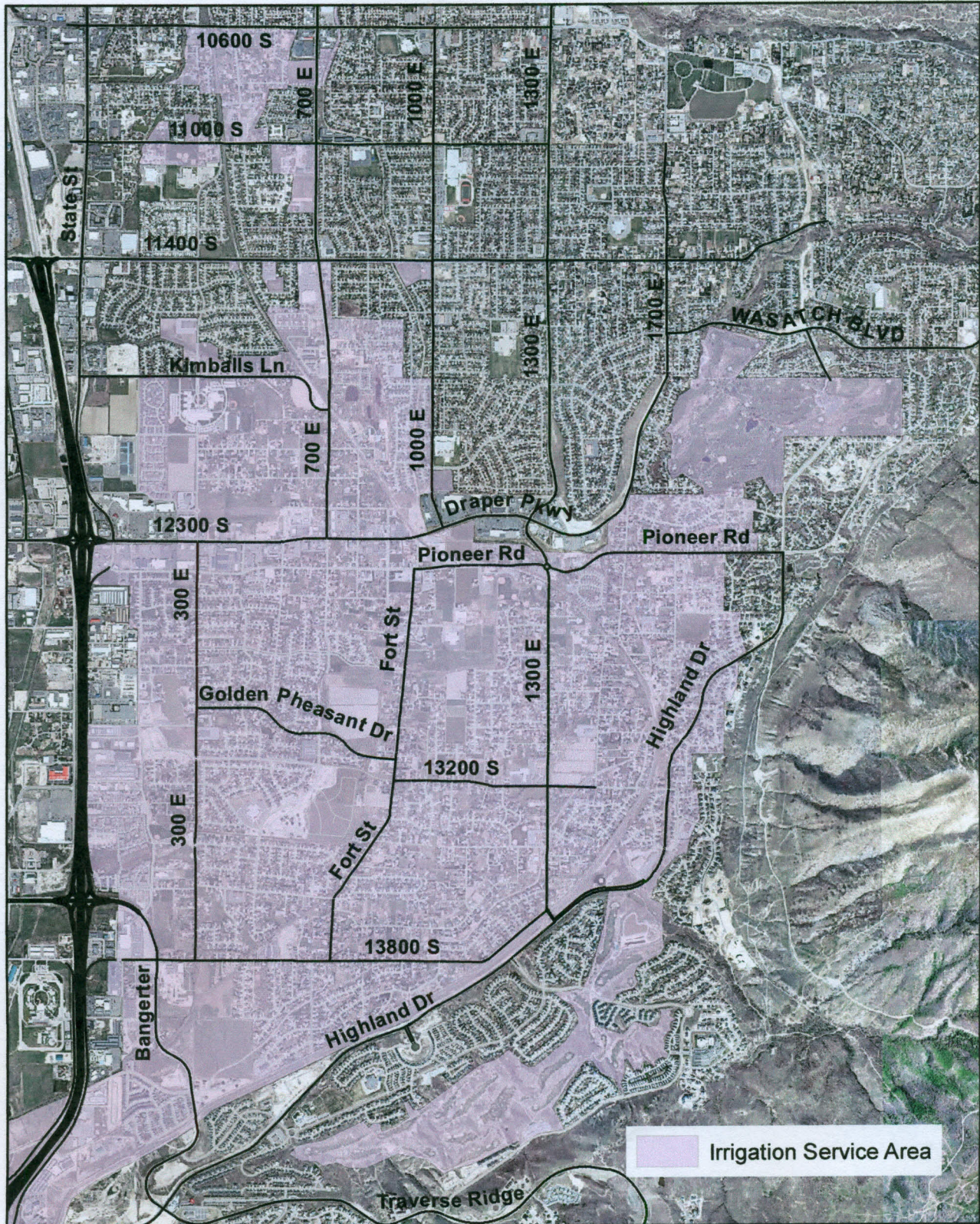


# Pressurized Irrigation Rates



## Residential Base Fees

(all fees are assessed year round)

- < 1/3 Acre Lot    \$17.85/Month
- < 2/3 Acre Lot    \$30.45/Month
- < 1 Acre Lot      \$37.80/Month
- > 1 Acre    37.80 X percentage of additional acreage/Month
- Metered Rate   \$10.00/Month + \$160.00/Acre Foot

## REQUIREMENTS FOR PRESSURIZED IRRIGATION

### CLASS A STOCK REQUIREMENTS:

0 TO 1/3 ACRE = 1 SHARE  
OVER 1/3 TO 2/3 ACRE = 2 SHARES  
OVER 2/3 TO 1 ACRE = 3 SHARES

### PRESSURE IRRIGATION CONNECTION FEE:

0 TO 1/3 ACRE	\$ 505
OVER 1/3 TO 2/3 ACRE	\$ 975
OVER 2/3 TO 1 ACRE	\$1,080
Lot larger than 1 Acre	\$2,160/Acre
Metered Property	\$2,160/lrr. Acre
Commercial Property	\$2,160/lrr. Acre

### MONTHLY PRESSURE IRRIGATION COST:

0 TO 1/3 ACRE LOT	(.0 - .33 Acres)	\$17.85/MO. or \$214.20/YR
OVER 1/3 TO 2/3 ACRE LOT	(.34 - .66 Acres)	\$30.45/MO. or \$365.40/YR
OVER 2/3 TO 1 ACRE LOT	(.67 -1.0 Acres)	\$37.80/MO. or \$453.60/YR
Larger than 1 Acre (Residential) \$37.80 x percentage of add'l acreage		

Commercial, Institutional & Subdivision Open Space (if not metered) - Total Coverage. Total actual acreage - \$79.80 x percentage of add'l acreage

\$79.80/MO. or \$957.60/Acre/Year

PAYMENT OF WATER BILL IS DUE ON OR BEFORE THE 22<sup>nd</sup> OF EVERY MONTH. PAYMENT RECEIVED AFTER THAT DATE WILL NOT BE CREDITED UNTIL NEXT BILLING PERIOD AND MAY INCUR A LATE FEE.

~ BILLS ARE PROCESSED MONTHLY  
~ ACCOUNTS 90+ DAYS PAST DUE OR HAVE AN UNPAID BALANCE OF \$500 OR MORE ARE SUBJECT TO BEING SHUT-OFF

IRRIGATION WATER IS CHARGED AND BILLED ON A YEARLY BASIS FROM JANUARY THROUGH DECEMBER. THE SECONDARY WATER IS EXPECTED TO BE AVAILABLE FROM APRIL 15<sup>TH</sup> THROUGH OCTOBER 15<sup>TH</sup>. HOWEVER, WATER MAY BE TURNED ON OR OFF EARLIER OR LATER THAN EXPECTED DEPENDING ON THE AVAILABILITY OF WATER FROM UTAH LAKE.